

MINISTRY OF CIVIL AVIATION



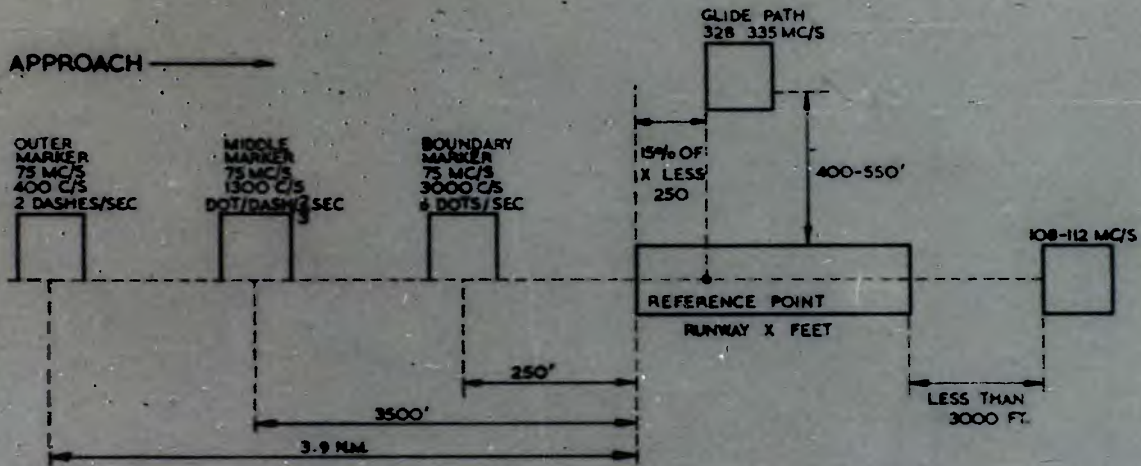
FILM STRIP NO. 2
**THE INSTRUMENT
LANDING SYSTEM**
(GENERAL)

PRODUCED BY

THE
PHOTOGRAPHIC AND REPRODUCTIONS
BRANCH AIR MINISTRY

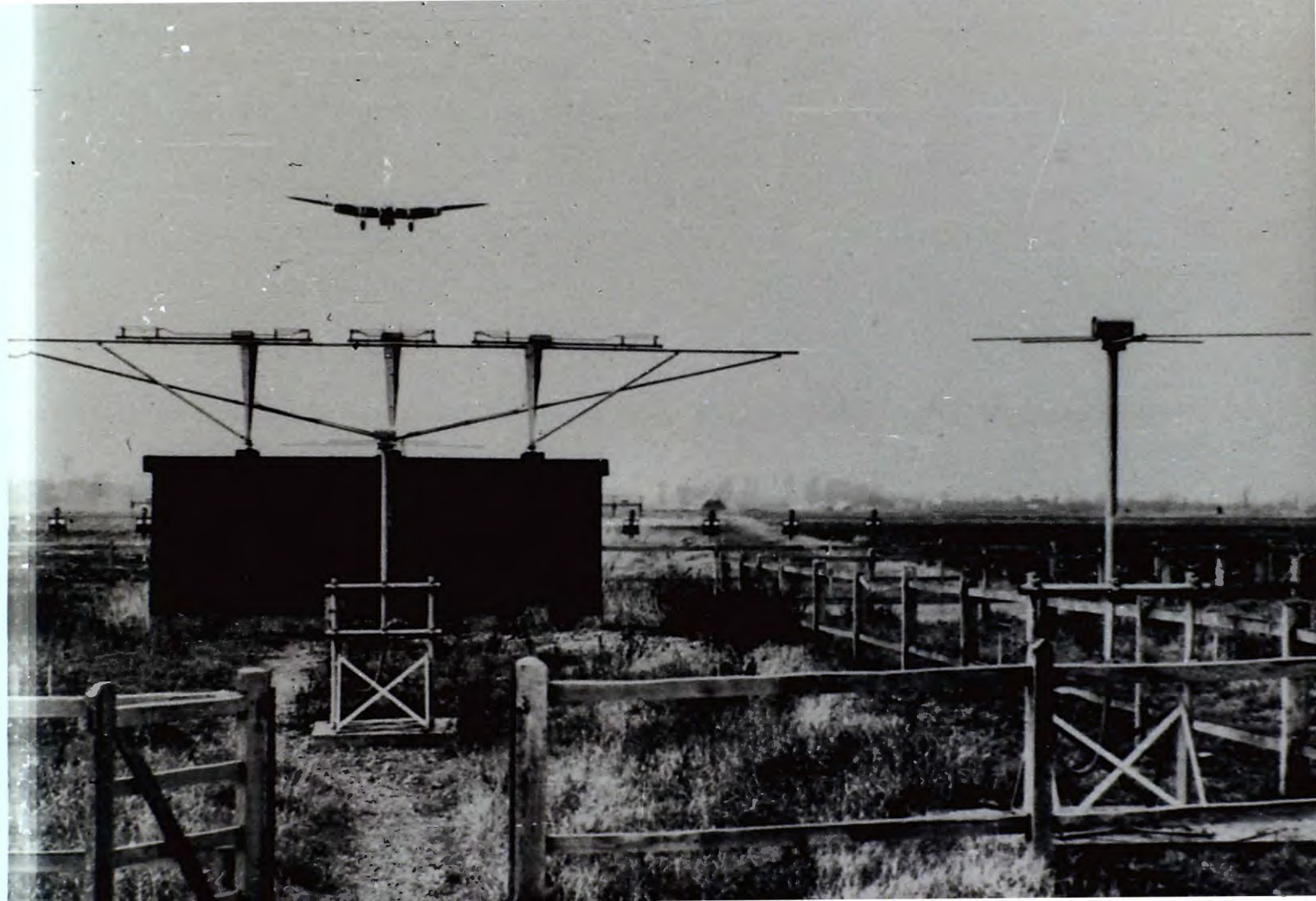
FOR

TELS TRAINING



AIRFIELD LAYOUT





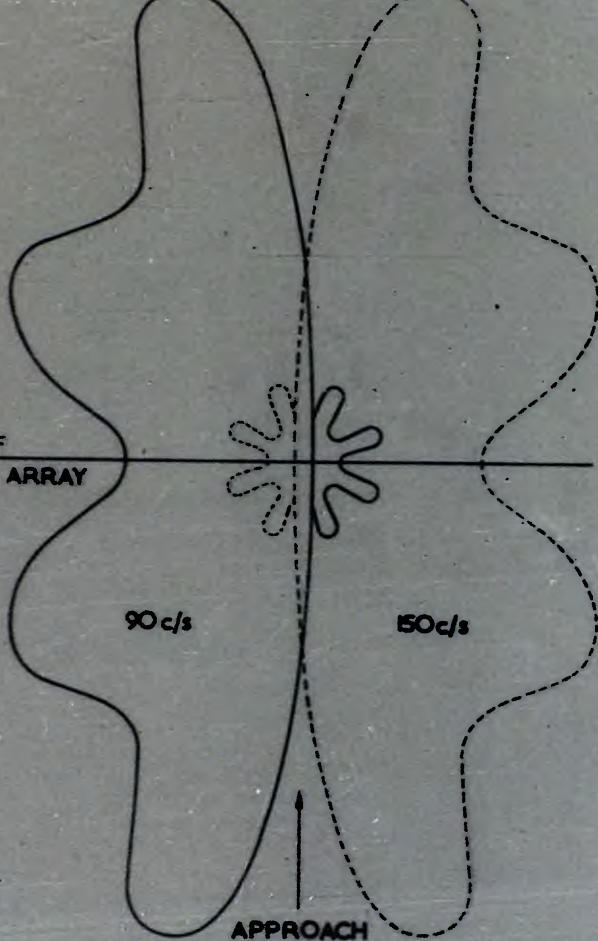
AXIS OF
LOCALIZER ARRAY

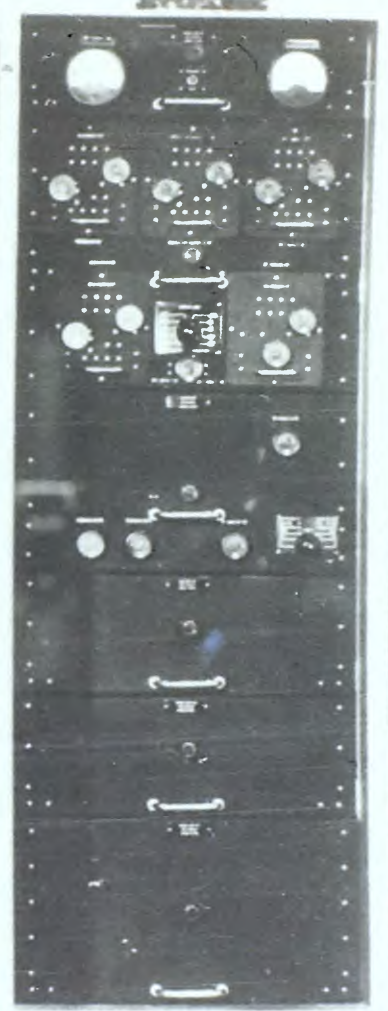
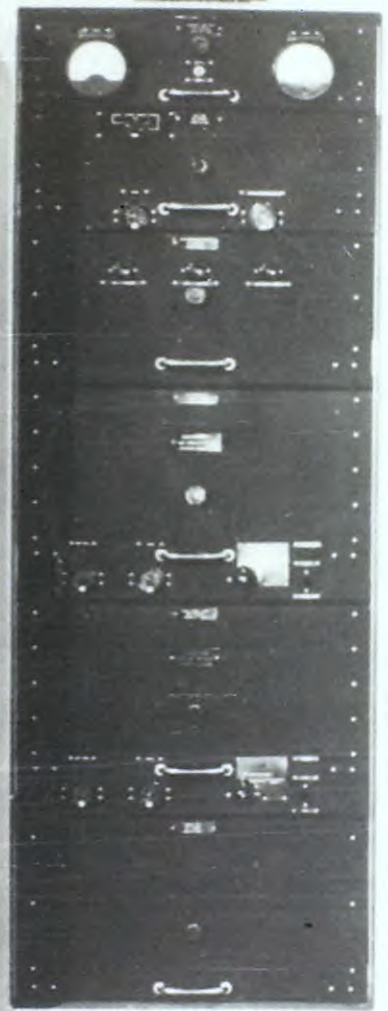
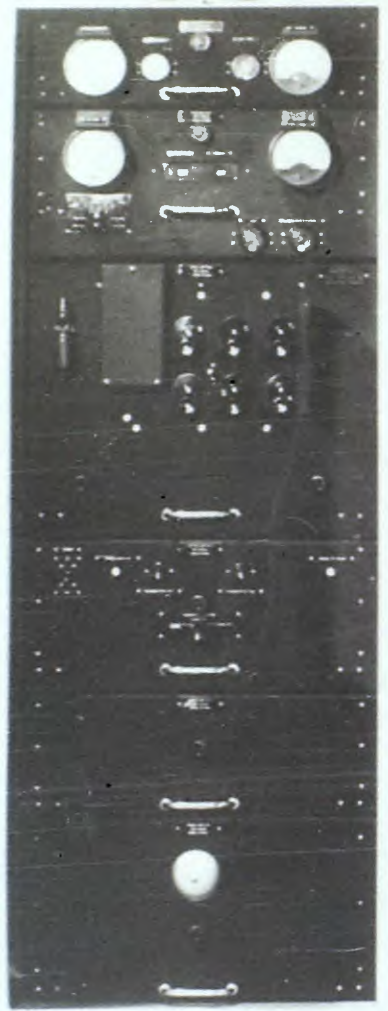
90 c/s

150 c/s

↑
APPROACH

LOCALIZER
RADIATION PATTERN

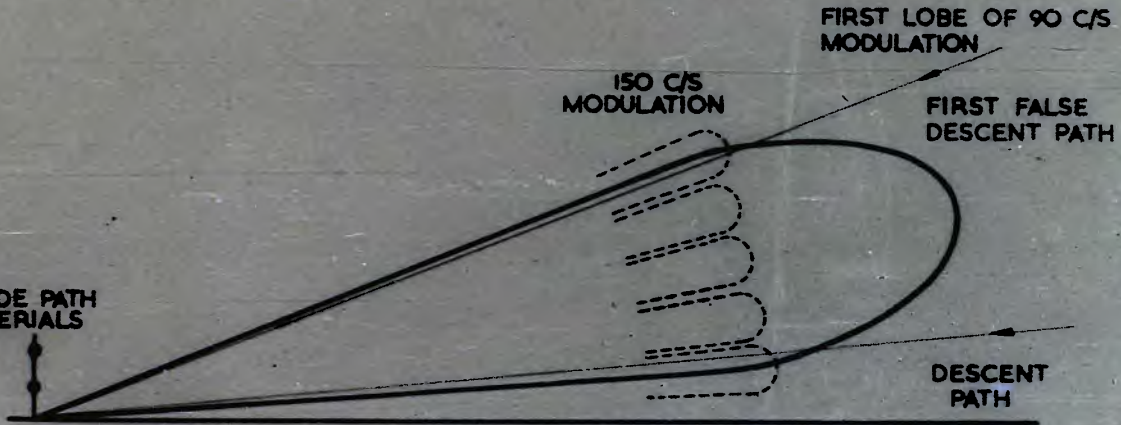








GLIDE PATH
AERIALS



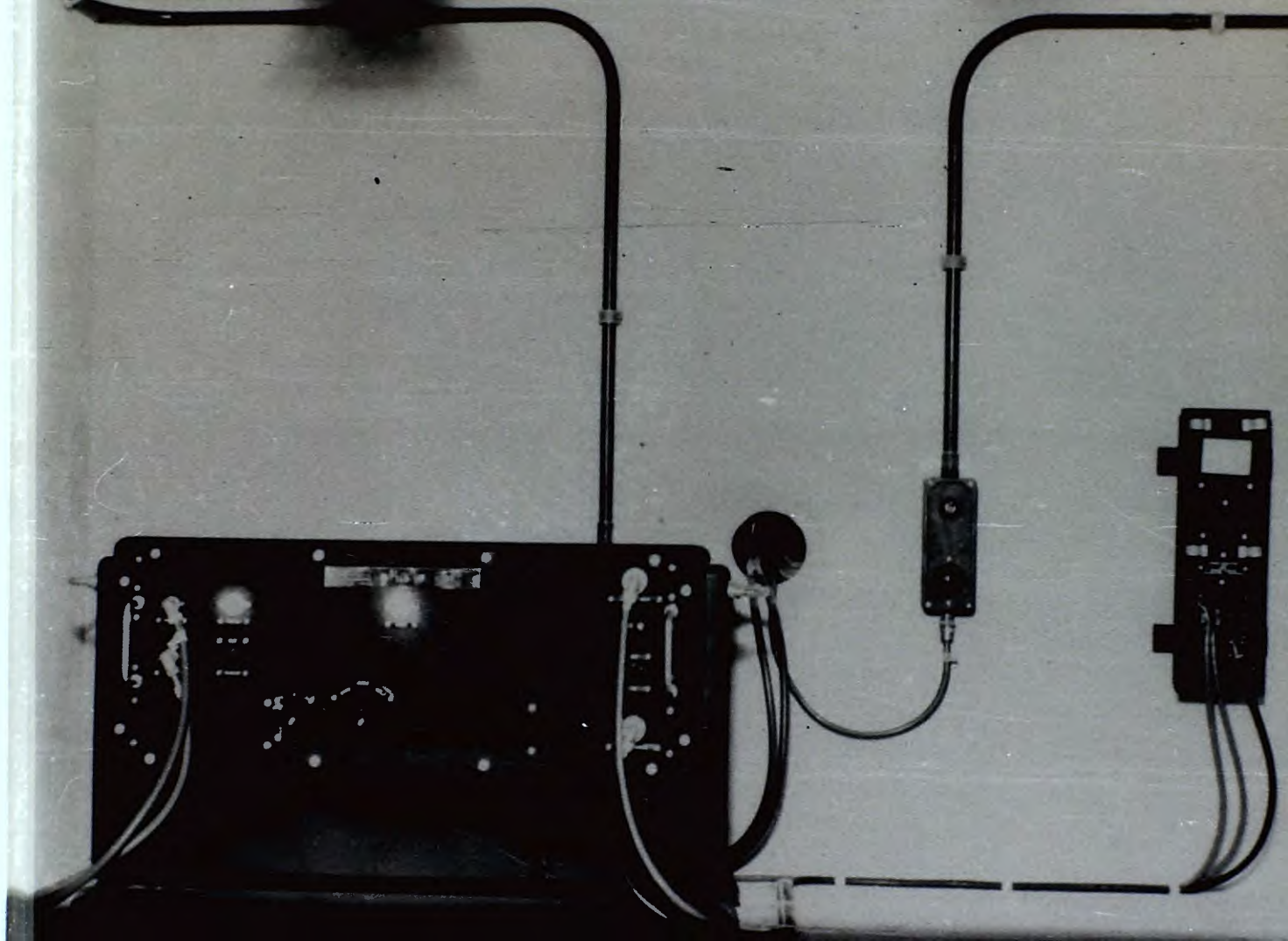
150 C/S
MODULATION

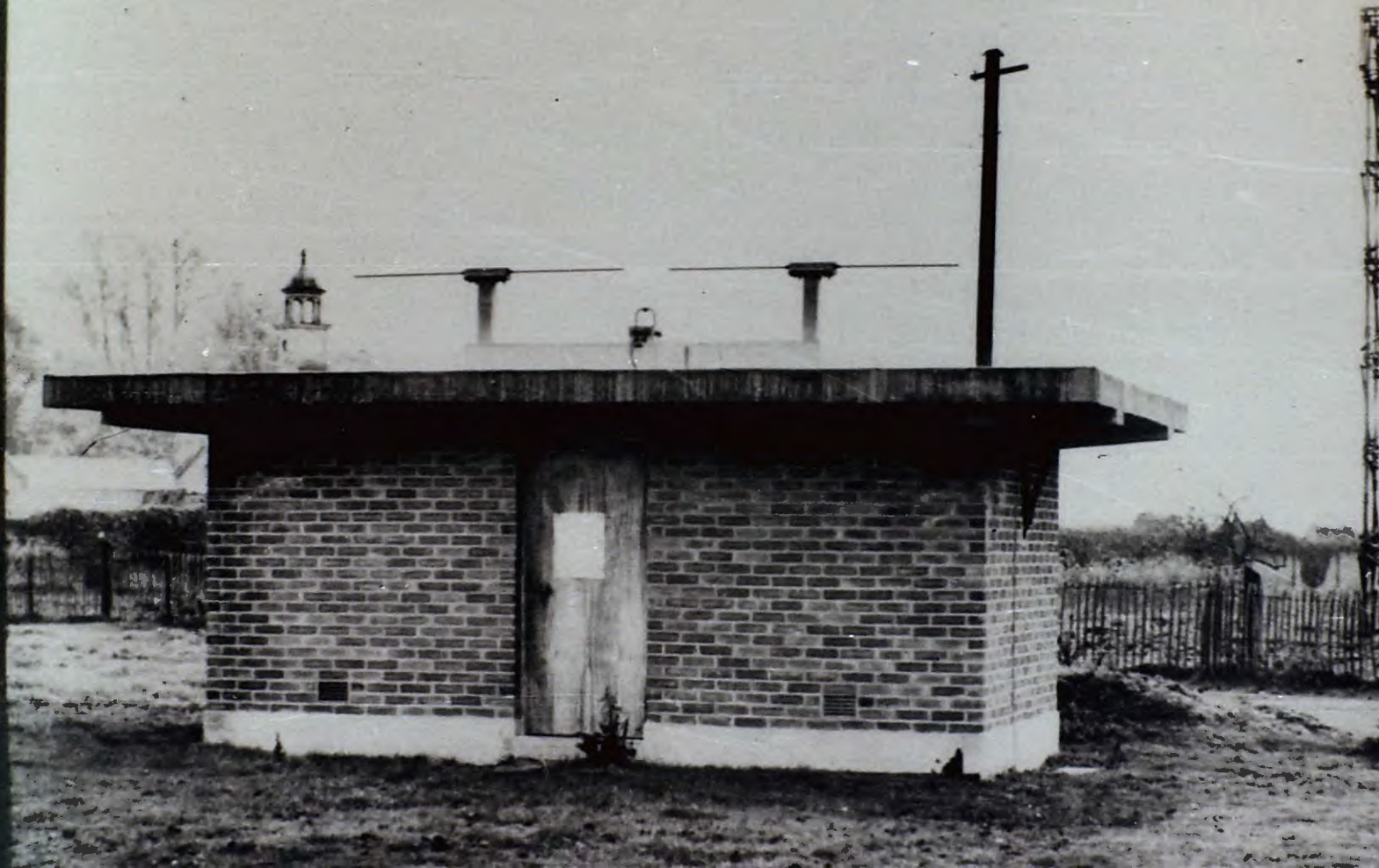
FIRST LOBE OF 90 C/S
MODULATION

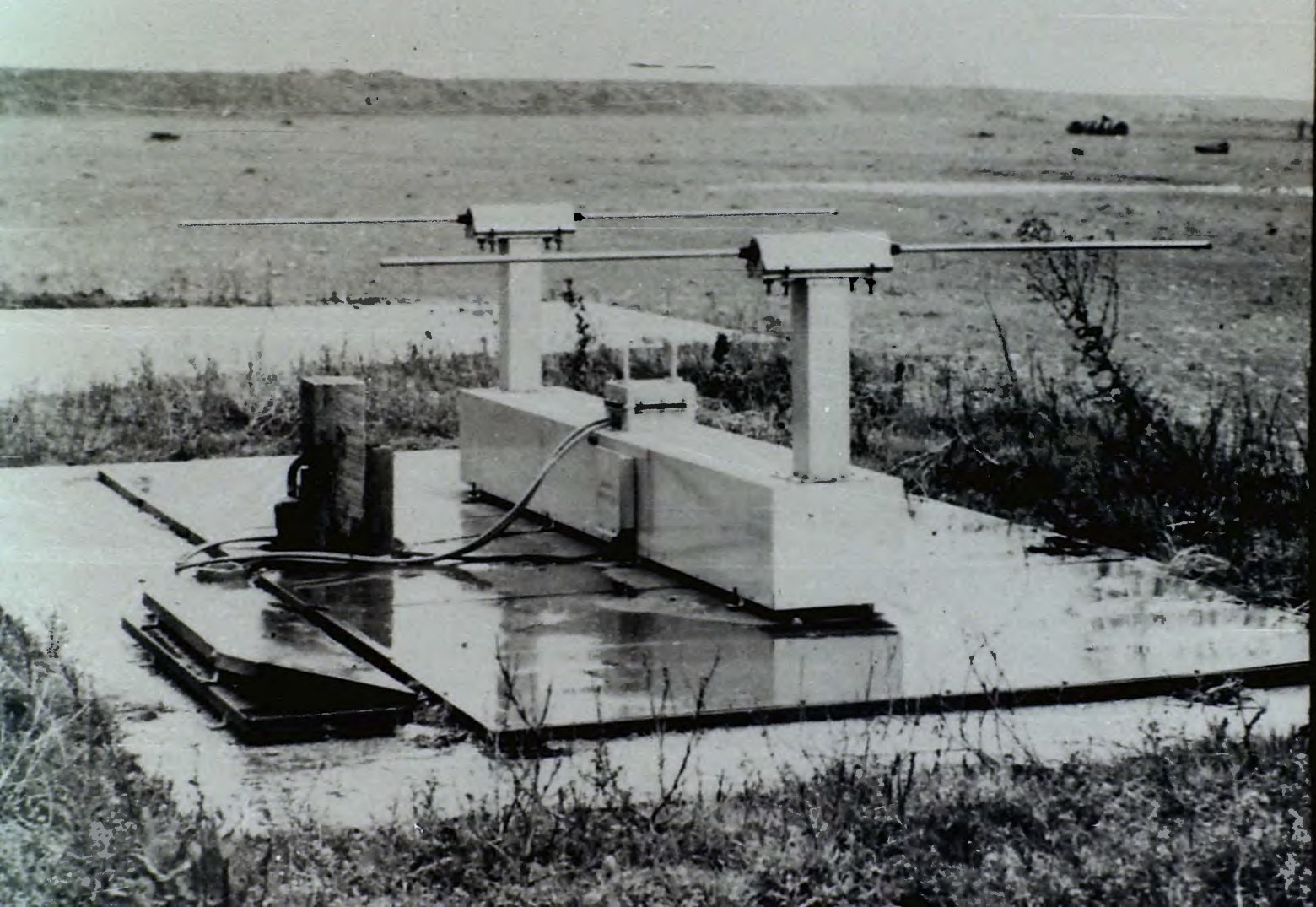
FIRST FALSE
DESCENT PATH

DESCENT
PATH

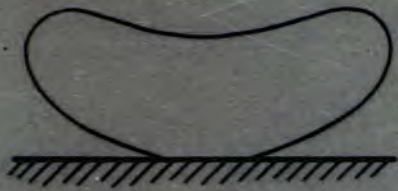
GLIDE PATH
RADIATION PATTERN



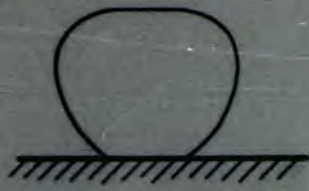




OUTER AND MIDDLE MARKERS



BOUNDARY MARKER

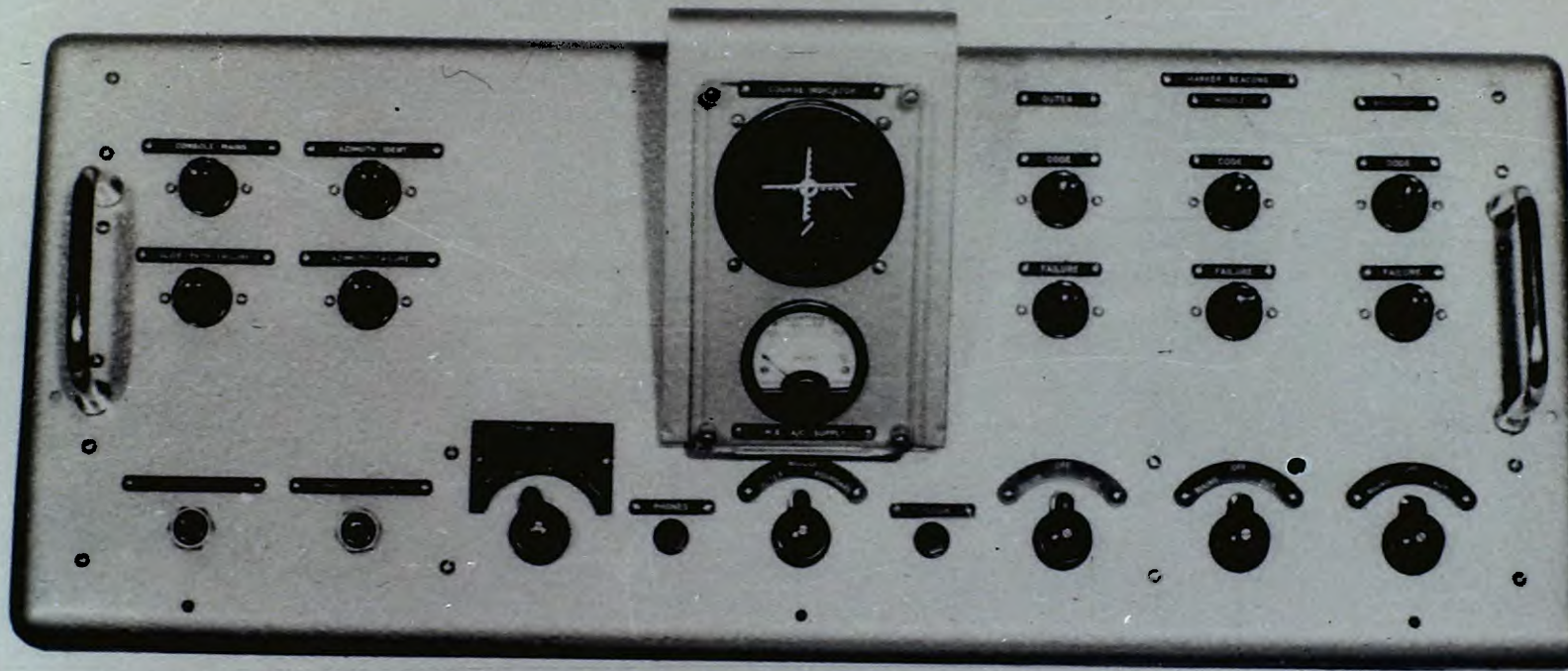


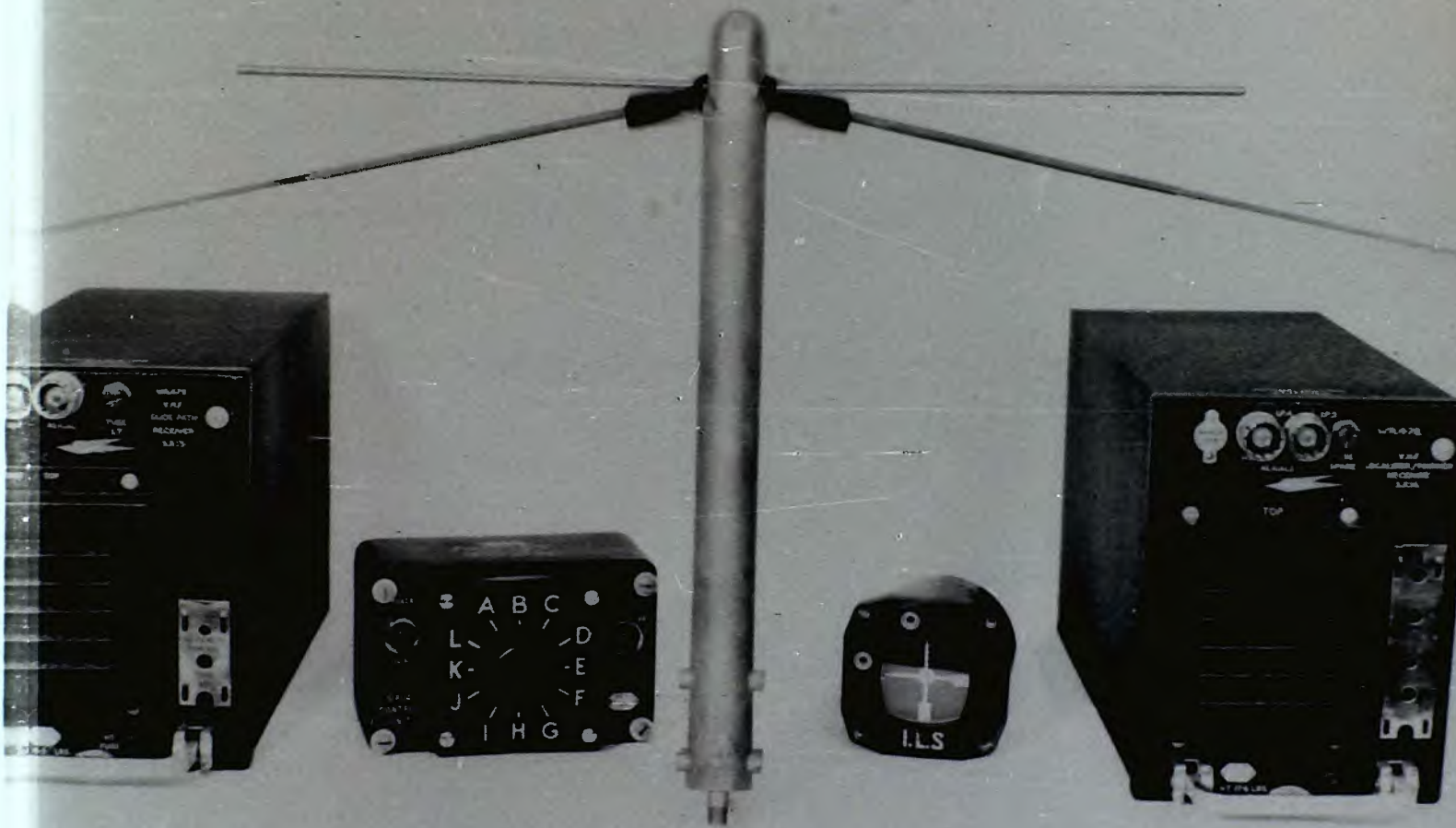
VERTICAL PATTERNS



HORIZONTAL PATTERNS





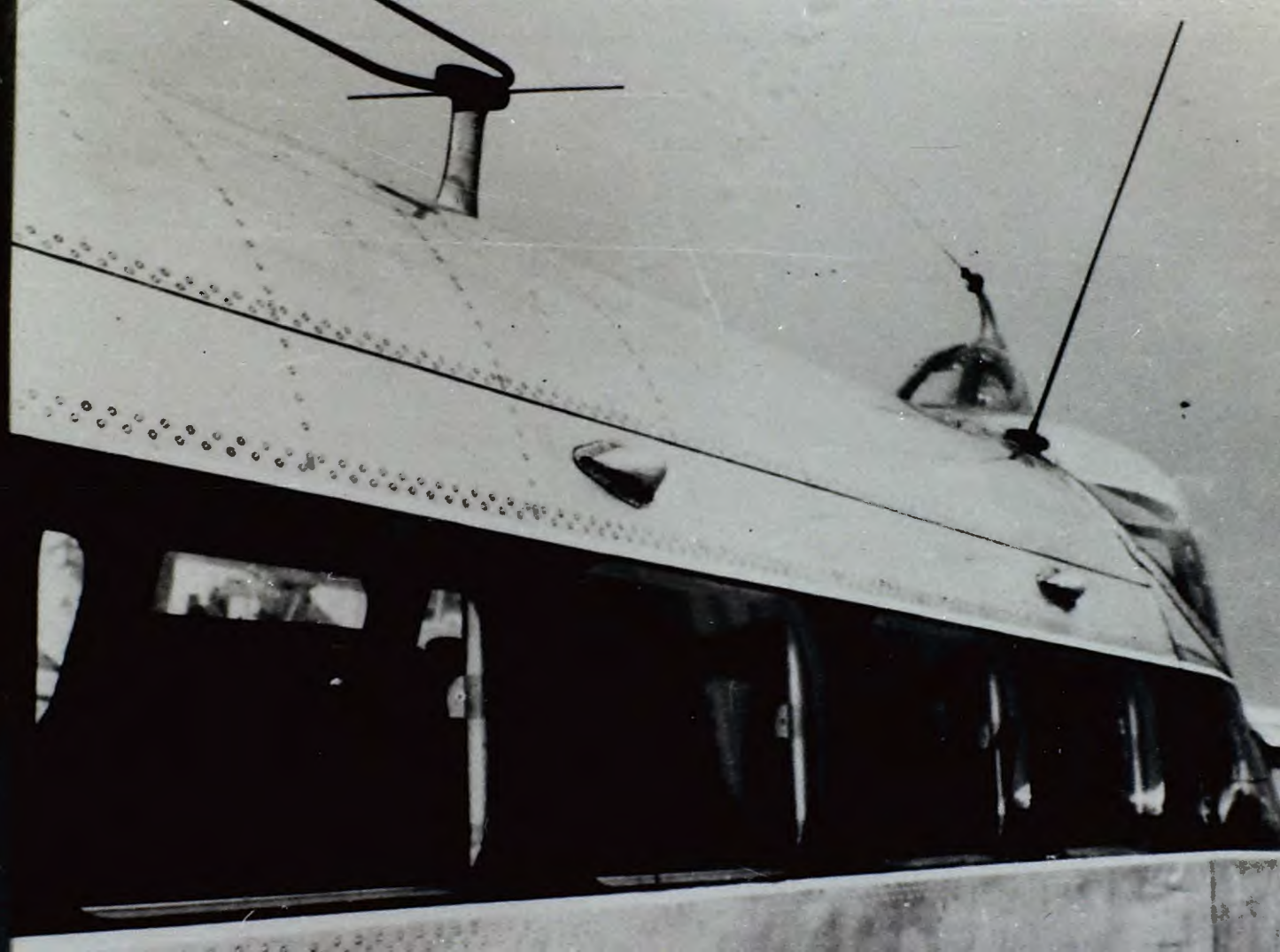


VARIABLE
VARIABLE
SLIDE PATH
RECEIVER
3.3-7.5

A B C
L K D
J E F
I H G

I.L.S.

VARIABLE
RECEIVER
I.L.S.
TOP
VARIABLE
RECEIVER
3.3-7.5





A
B
C
D

128

FIRE EXTINGUISHER

10

RAC

100



AIRCRAFT ABOVE AND
TO LEFT OF CORRECT
APPROACH PATH



AIRCRAFT ABOVE AND
TO RIGHT OF CORRECT
APPROACH PATH



AIRCRAFT ON CORRECT
APPROACH PATH



AIRCRAFT BELOW AND
TO LEFT OF CORRECT
APPROACH PATH



AIRCRAFT BELOW AND
TO RIGHT OF CORRECT
APPROACH PATH

THE AIRCRAFT INDICATOR

MINISTRY OF CIVIL AVIATION



THE END

PRODUCED BY

THE
PHOTOGRAPHIC AND REPRODUCTIONS
BRANCH - AIR MINISTRY

FOR

TELS TRAINING